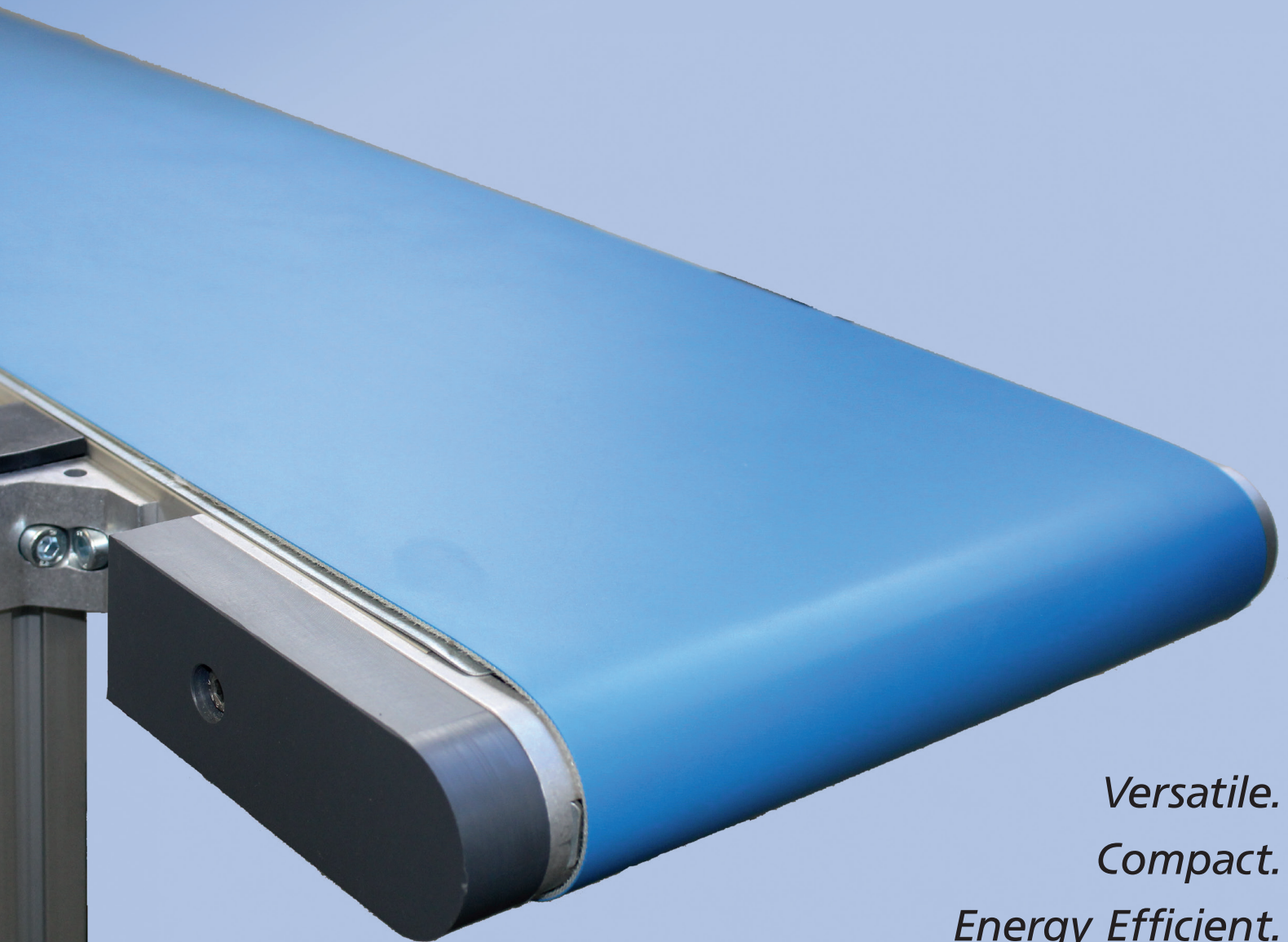
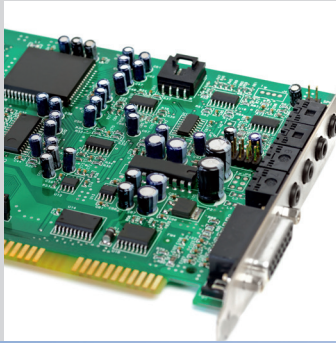


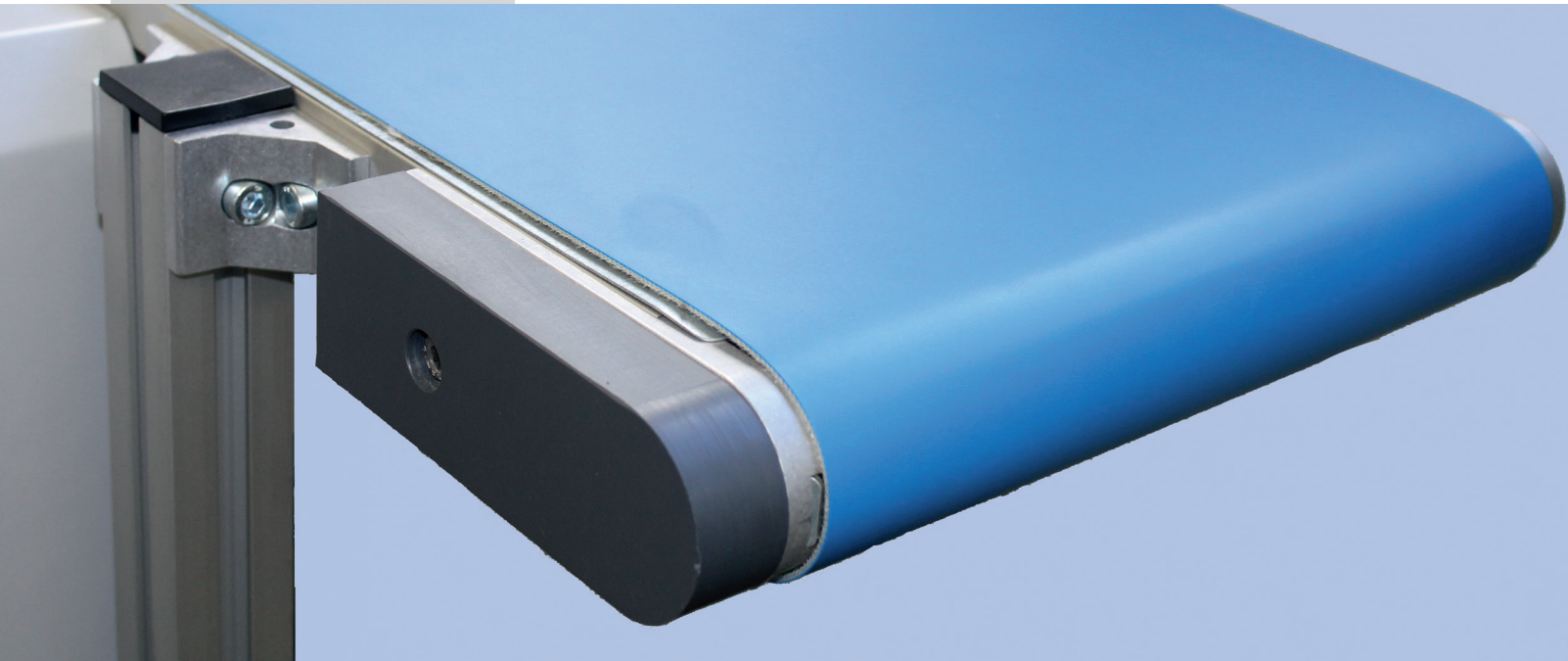


Belt Conveyor GUF-P 2000 CA



Versatile.
Compact.
Energy Efficient.

Belt Conveyor GUF-P 2000 CA



Compact Design for Streamlined Integration

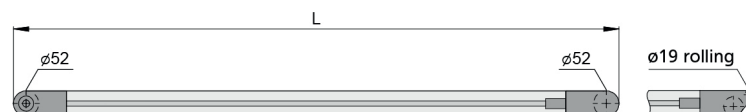
The GUF-P 2000 CA drive from mk North America offers the power and durability of our most popular belt conveyor combined with the streamlined design that an internal drive drum motor offers.

As the newest member of the GUF-P 2000 conveyor family, this conveyor is fully compatible with all GUF-P 2000 idler options as well as all mk side rails and support stands. The internal drive drum motor is 24 VDC which includes a drive card.

Customers looking for a “plug and play” option can order the optional control box, which integrates the drive card; and provides for on-off buttons,

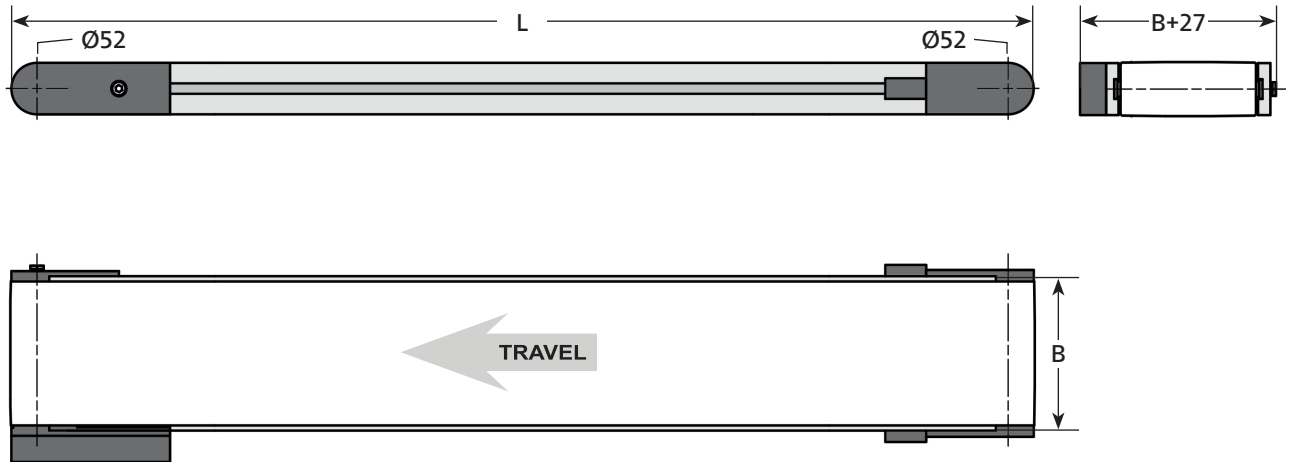
adjustable speed and a cord and plug for 110 VAC. The drive drum motor is lagged and crowned providing superior power transmission and integrated belt tracking. This unit is fully compatible with most belting options from mk, found in our conveyor catalog.

The frame is constructed out of mk’s rigid t-slot aluminum extrusion, which provides for a low-profile solution with a frame height of 50 mm. This compact design makes the GUF-P 2000 CA conveyor ideally suited for press and stamping applications, as well as any process in which space is limited.



GUF-P 2000 CA

Belt conveyor with internal drive drum motor



Features

	Technical information	Comments
Conveyor length L	600 - 10,000 mm	any increment possible
Conveyor width B	300 to 600 mm	length-width ratio at least 2:1
Belt width	B-10 mm	
Speed	Variable speed Minimum speed is 7 fpm Maximum speed is 250 fpm	
Load capacity	total load to 35 kg	
Drive Drum Voltage	24 VDC	
Drive Card (included)	24 VDC input 15A max peak current Includes motor protection	
Speed Control / Cable (optional)	115 VAC input Includes a speed pot for speed adjustment Cable lengths up to 3 m	



mk North America, Inc.
an mk Technology Group Company
105-125 Highland Park Drive
Bloomfield, CT 06002, USA
Phone: (860) 769-5500
Fax: (860) 769-5505
www.mknorthamerica.com
sales@mknorthamerica.com