

**Side Rails**

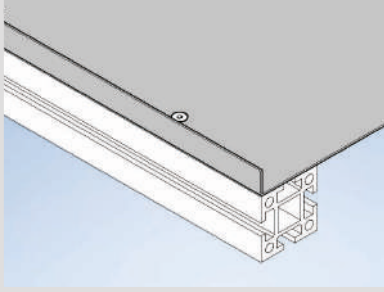
Fixed Side Rails	294
Adjustable Side Rails	295
Individual Components	297

# Side Rails

## Fixed Side Rails

**Side Rail SF1.3**

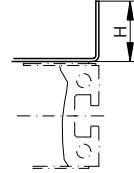
**B17.00.003**



H = 10–100 mm

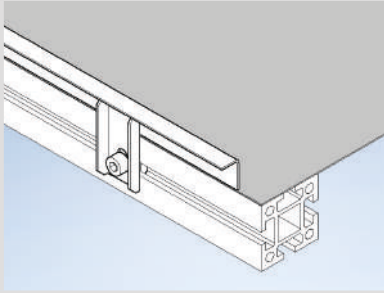
The length of this side rail is limited to the length of the slide bed and is therefore shorter than the conveyor length L. It cannot be removed.

**Only available for belt conveyors!**

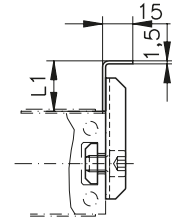


**Side Rail SF2.1**

**B17.00.004**

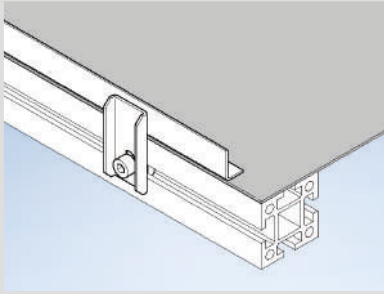


L1 = 25, 50, 75 mm

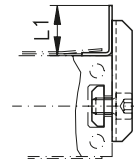


**Side Rail SF2.2**

**B17.00.005**



L1 = 25, 50, 75 mm

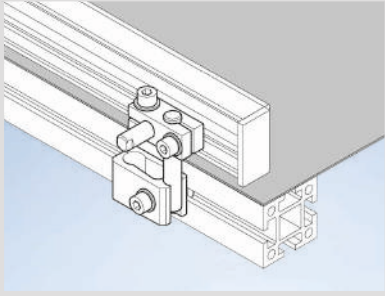


9

## Adjustable Side Rails

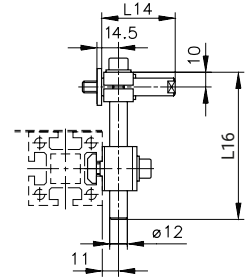
### Side rail SF01

### B17.00.101



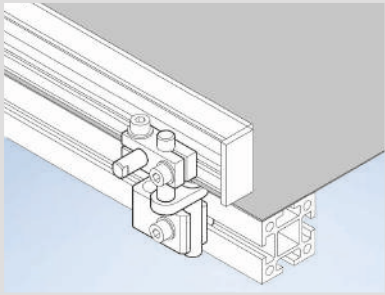
Separate holder HSF01  
**B27.01.001**

L14 = 50, 75, 100 mm  
 L16 = 75, 100, 150, 200 mm



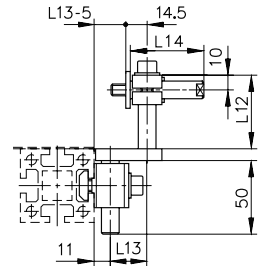
### Side rail SF02

### B17.00.102



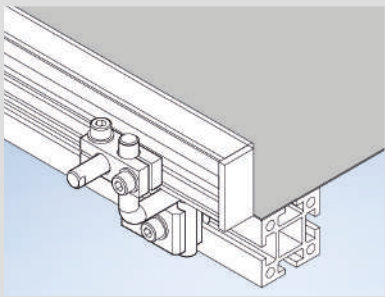
Separate holder HSF02  
**B27.01.002**

L12 = 50, 75, 100, 150 mm  
 L13 = 25, 50 mm



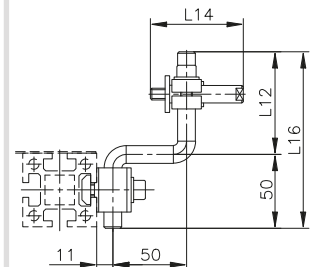
### Side rail SF03

### B17.00.103



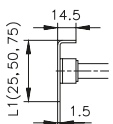
Separate holder HSF03  
**B27.01.003**

L16 = 100, 150, 200

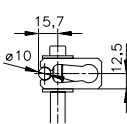


### Side Rail Strips

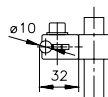
Type 01  
**B17.01.013**



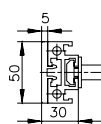
Type 11  
**B17.01.017**



Type 12  
**B17.01.018**



Type 21  
**B17.01.010**



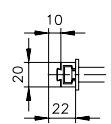
Type 22  
**B17.01.014**

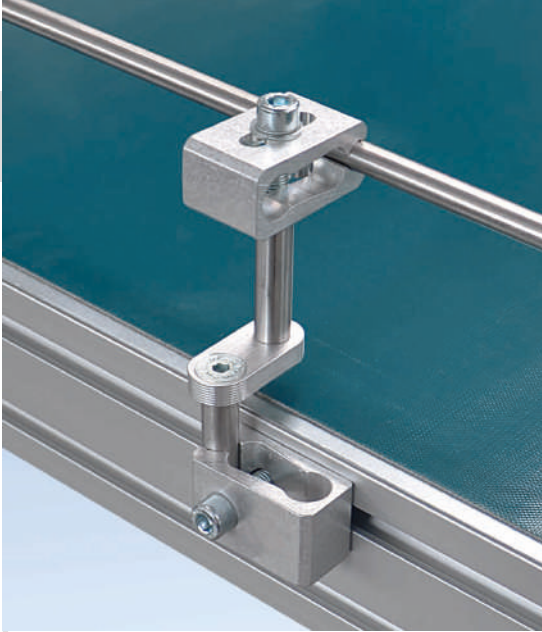


Type 23  
**B17.01.015**



Type 24  
**B17.01.016**





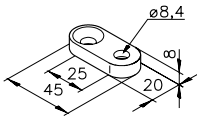
## Individual Components

### Clamps for round rods

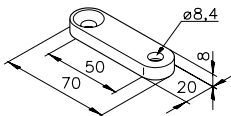
Material: Tumbled aluminium

### Side walls for round rods

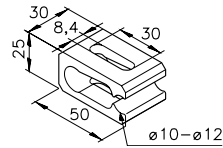
Material: Tumbled aluminium



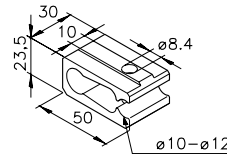
Side wall  
**34.09.0003**



Side wall  
**34.09.0004**

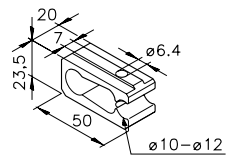


Clamp  
**30.00.0002**



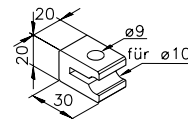
Clamp  
**30.00.0001**

For 10 mm slot width

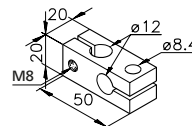


Clamp  
**30.00.0017**

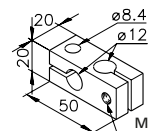
For 7 mm slot width



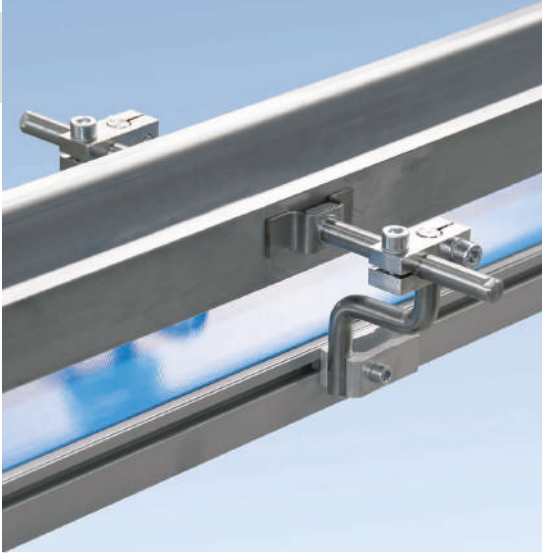
Short clamp  
**30.00.0038**



Clamp, right  
**30.00.0013**



Clamp, left  
**30.00.0047**

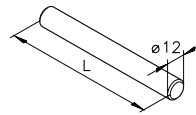


## Individual Components

### Round Rods

Material: Stainless steel

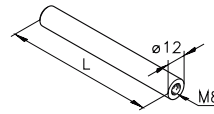
Rod,  $\phi$  12  
**7000AD. ....\***



2-chamfer

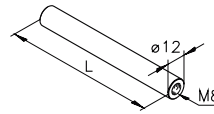
stock length 50, 75, 100,  
 150, 200 and 250 mm

Rod,  $\phi$  12  
**7000AA....\***



M8 female thread, one end  
 stock length 50, 75, 100,  
 150 and 200 mm

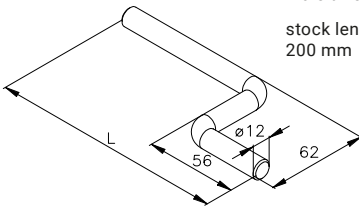
Guide rod,  $\phi$  12  
**7000AF. ....\***



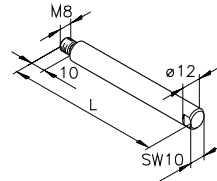
M8 female thread, both ends  
 stock length 50, 75, 100  
 and 150 mm

Guide rod,  $\phi$  12  
**7000DB. ....\***

male thread, M8, one end  
 stock length 100, 150 and  
 200 mm

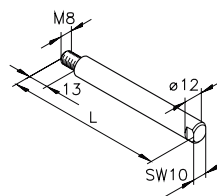


Guide rod,  $\phi$  12  
**7000CC. ....\***



male thread, M8, one end  
 stock length 50, 75 and  
 100 mm

Guide rod,  $\phi$  12  
**7000CA. ....\***



male thread, M8, one end  
 stock length 50, 75 and  
 100 mm

\* Length in mm (4 digits)