

» Lines and curves for transporting products of low to moderate weight. «



The roller conveyor system with gravity drive (RBS) is typically used in industrial automation for semi-automatic interlinking at picking stations or kanban shelves. The difference between the RBS-P 2065 and 2066 roller conveyors is that the RBS-P 2066's conveyor frame profile serves as the side rail, while in the RBS-P 2065 the rollers protrude beyond the side profiles, making the system suitable for extra-wide products and lateral discharging.

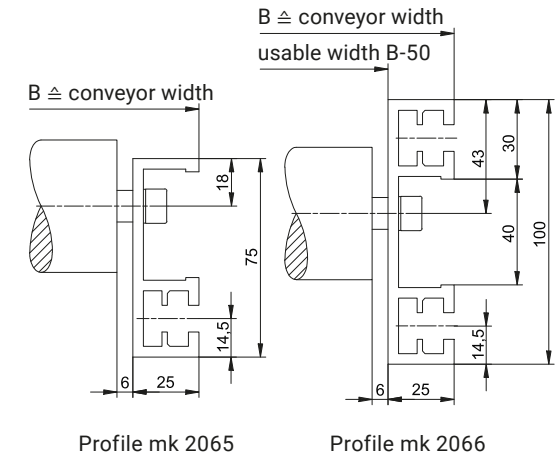
An extensive selection of different roller types makes the system extremely flexible and suitable for a wide range of applications. The conveyors are available in both straight and curved configurations. The roller diameters of 20, 40 or 50 mm ensure that both large and small workpieces can be transported reliably and without interruption. The longitudinal slots in the profile beams can be used to attach side rails, stands, initiators and other accessories.

Products can be transported along a downward gradient either by hand or using gravitational force. A slope of 1 to 2° is usually sufficient for conveying products with gravitational force. Please note that high speeds can be reached with long lines and/or steeper slopes. This kinetic energy will require dampened deceleration.

Benefits of the RBS-P 2065/2066

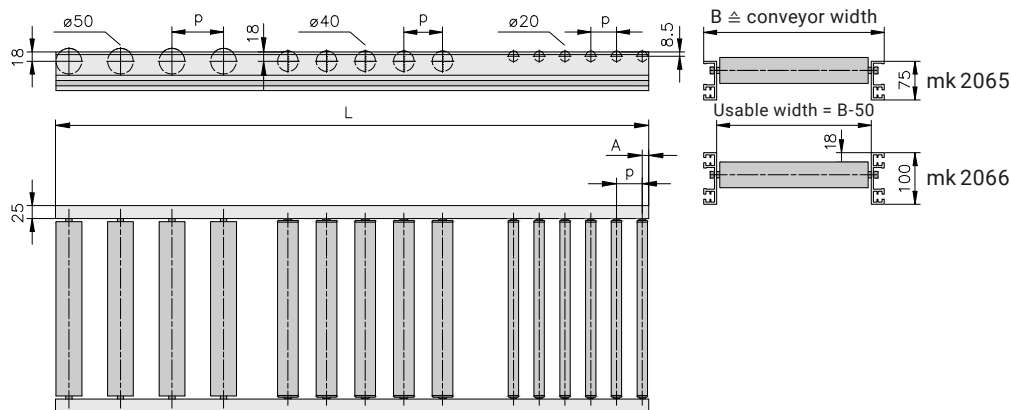
- For transporting products of low to moderate weight
- Semi-automatic interlinking at picking stations or even kanban shelves
- Conveyor frame profile of the RBS-P 2066 functions as the side rail
- Conveyor frame profile of the RBS-P 2065 allows for extra-wide product and lateral discharging
- Side slots on the conveyor frame profile for attaching accessories such as side rails, stands, etc.

Cross Section



Line ∅ 20: B61.00.001 / ∅ 40: B61.00.002 / ∅ 50: B61.00.003

A feature of the gravity roller conveyors RBS-P 2065 and 2066 is that the rollers protrude over the profile edge with conveyor frame profile 2065 (making them suitable for extra-wide product). In addition, the conveyor frame profile on the RBS-P 2066 serves as a side rail.

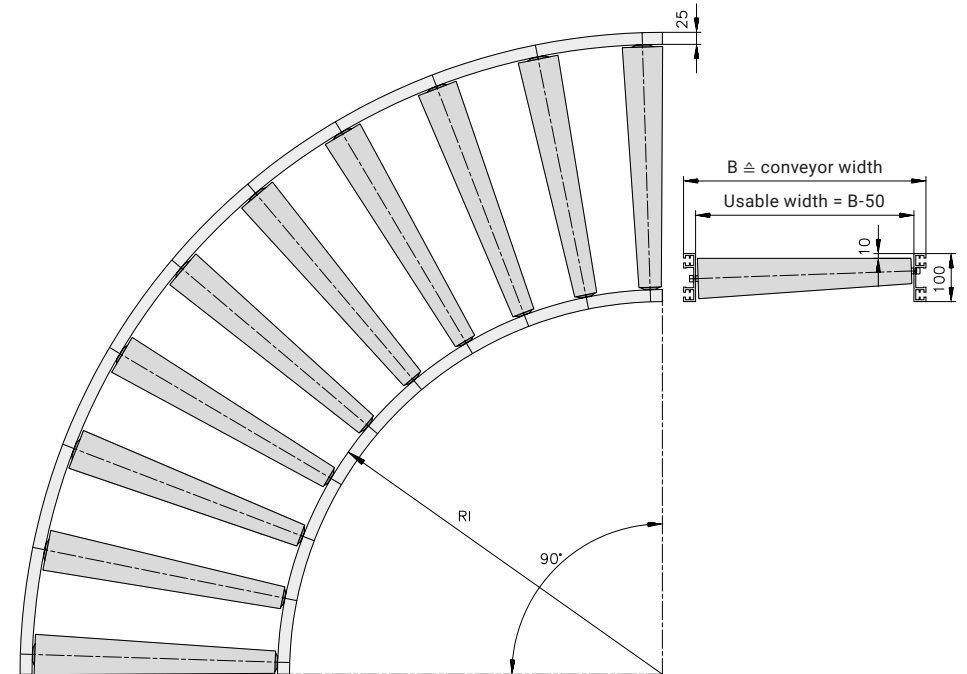


Technical data

Conveyor width B	∅ 20, plastic ∅ 40, plastic ∅ 50, plastic ∅ 50, galv. steel	150, 200, 250, 300 and 350 mm 150, 200, 250, 300 and 350 mm 250, 350, 450, 550 and 650 mm 250–1050 mm in 100 mm increments	Ident. no.: B61.00.001 Ident. no.: B61.00.002 Ident. no.: B61.00.003 Ident. no.: B61.00.003
Conveyor length L		200–5000 mm	
Spacing p	∅ 20 ∅ 40 ∅ 50	25, 50 and 75 mm 50, 75, 100 and 125 mm 75, 100, 125, 150, 175, 200, 225 and 250 mm	A = 12.5 mm A = 25 mm A = 25 mm
Conveyor frame profile		mk 2065 or mk 2066	
Roller types		Type 43–46, 58 and 59	from p. 276
Stand			from p. 286
Load capacity, usual		depending on the conveyor width and conveyor roller, up to 100 kg/m and a total load capacity of 400 kg	higher on request

Curve B61.00.004

The gravity roller conveyor 2066 has an impressively simple design. The conical conveyor rollers that it uses prevent the transported product from twisting on the conveyor.



Technical data

Conveyor width B	321-871 mm in 50 mm increments							
Inner radius RI	800 (with B = 360, 460, 560, 660, 760, 860) 850 (with B = 310, 410, 510, 610, 710, 810)							
Conveying angle	90°							others on request
Conveyed product length recommended number of rollers	150	200	250	300	350	450	550	
	21	17	15	13	11	10	9	
Conveyor frame profile	mk 2066							
Roller types	Type 47 and 48							from p. 276
Stand								from p. 286
Load capacity, standard	depending on the conveyor width and conveyor roller, up to 100 kg/90°							higher on request



Gravity roller conveyor RBS-P 2066 with end stop



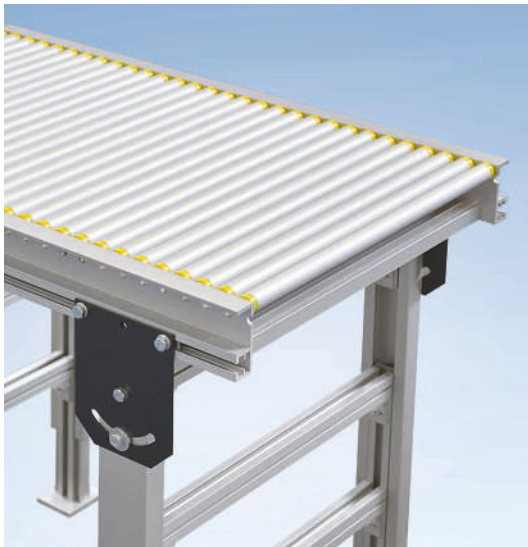
Gravity roller conveyor RBS-P 2065 with angle plate as side rail



Gravity roller conveyor RBS-P 2066 with 45° curve and stand 53.2



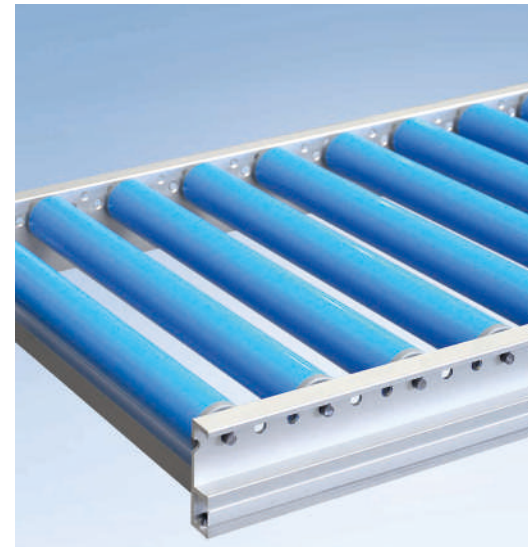
Gravity roller conveyor RBS-P 2065 with ø 20 aluminium rollers



Gravity roller conveyor RBS-P 2065 with ø 20 aluminium rollers and stand 53.1



Belt discharge via the gravity roller conveyor RBS-P 2065 with end stop



Gravity roller conveyor RBS-P 2065 with ø 50 plastic rollers



Gravity roller conveyor RBS-P 2066 with ø 50 steel rollers as supply and return line with shelf at the end of the conveyor

Custom applications from page 404

» Lines and curves
for transporting products
of moderate weight. «



The roller conveyor system with gravity drive (RBS) is typically used in industrial applications for semi-automatic interlinking at picking stations, on buffering tracks, in interim storage or in assembly lines. Products can be transported along a downward gradient either by hand or using gravitational force. The sturdier mk 2255 profile makes the RBS-P 2255 gravity roller conveyor suitable for heavier loads than the RBS-P 2065/66 system.

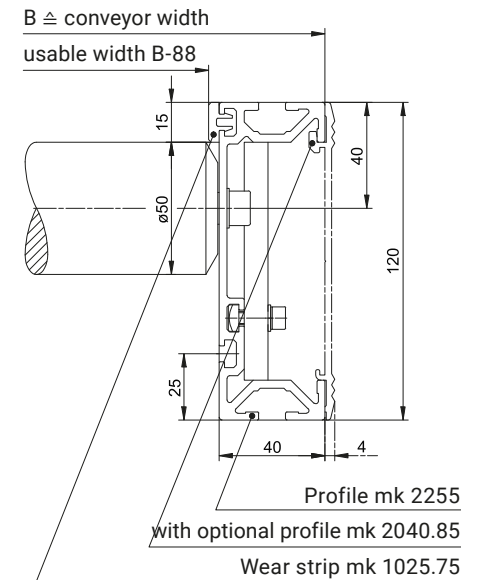
The gravity roller conveyor is available in both straight and curved configurations and can be combined with driven roller conveyors (RBT and RBM). All roller conveyors are built from the mk 2255 roller conveyor profile, which includes longitudinal slots in the profile beams for attaching side rails, stands, initiators and other accessories.

Products can be transported along a downward gradient either by hand or using gravitational force. A slope of 1 to 2° is usually sufficient for conveying products with gravitational force. Please note that high speeds can be reached with long lines and/or steeper slopes. This kinetic energy will require dampened deceleration.

Benefits of RBS-P 2255

- For transporting products of moderate weight
- Semi-automatic interlinking at picking stations, on buffering tracks, in interim storage or in assembly lines
- mk 2255 conveyor frame profile allows for combination with driven roller conveyors (RBT, RBM)
- Side slots on the conveyor frame profile for attaching accessories such as side rails, stands, etc.

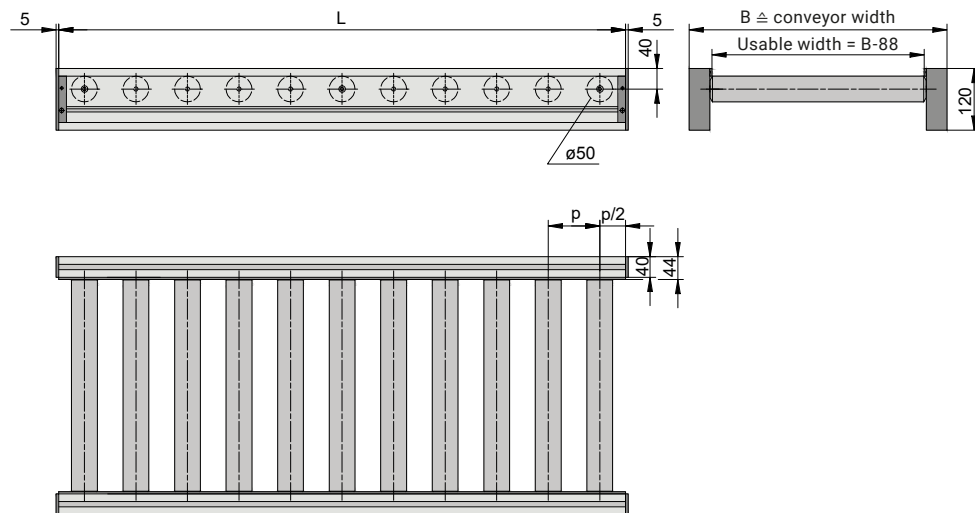
Cross Section



Line

B61.02.001

The gravity roller conveyor is based on the mk 2255 profile. The anodised conveyor frame profiles are designed for spacings of 75, 100 and 125 mm, and a roller diameter of 50 mm.



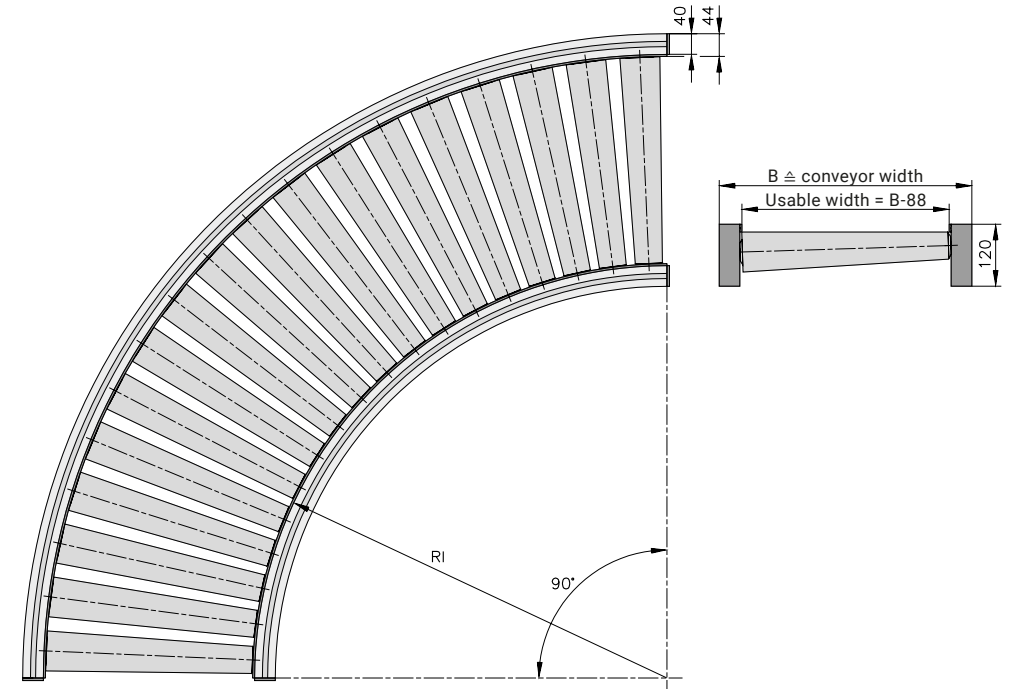
Technical data

Roller diameter	50 mm, plastic/galv. steel	
Conveyor width B	290, 390, 490, 590 and 690 mm	
Conveyor length L	500–10000 mm	
Spacing p	75, 100 and 125 mm	
Conveyor frame profile	mk 2255	
Roller types	plastic 43 + 44 or steel 45 + 46	from p. 276
Stand	only with conveyor stand option option D	from p. 286
Load capacity, standard	depending on the conveyor width and conveyor roller, up to 100 kg/m and a total load capacity of 400 kg	higher on request

Curve

B61.02.002

The gravity roller conveyor is based on the mk 2255 profile. The anodised conveyor frame profiles are designed for a 5° spacing and a roller diameter of 50 mm.



Technical data

Roller diameter	50 mm, conical, made from plastic	
Conveyor width B	401, 501, 601 and 701 mm	
Inner radius RI	800 mm	
Conveying angle	90° (others available on request)	
Spacing	5°/number: 18 rollers	
Conveyor frame profile	mk 2255	
Roller types	type 47 and 48	from p. 276
Stand	only with conveyor stand option option D	from p. 286
Load capacity, standard	depending on the conveyor width and conveyor roller, up to 100 kg/90°	higher on request



Gravity Roller Conveyor RBS-P 2255



Gravity roller conveyor RBS-P 2255 with separator unit at the roller conveyor outfeed



Gravity roller conveyor RBS-P 2255 with angled sheet as side rail



Gravity roller conveyor RBS-P 2255 with ø 50 plastic rollers



Gravity roller conveyor RBS-P 2255 with angled VA sheet steel as side rail, brush strip and end stop at the conveyor outfeed



Gravity roller conveyor RBS-P 2255



Gravity roller conveyor RBS-P 2255 with end stop and ø 50 mm steel rollers



Gravity roller conveyor RBS-P 2255 with protective cover and fixed stop at the end of the conveyor

Custom applications from page 404