

» For feeding and buffering in heavy load ranges. «

5



part of **versamove**

The accumulating roller chain conveyor SRF-P 2012 is particularly suitable for transporting pallets in the heavy load range (in the Versamove pallet circulation system, for instance). The free-spinning conveyor rollers run smoothly, even during accumulated operation. They also keep back-pressure forces to a minimum. Typical applications include interlinking or buffering between workstations and building complete transfer lines.

The wear and guide strips, made from ultra-high-molecular weight polyethylene, on which the accumulating roller chain runs and is guided, ensure a low coefficient of friction and excellent wear characteristics.

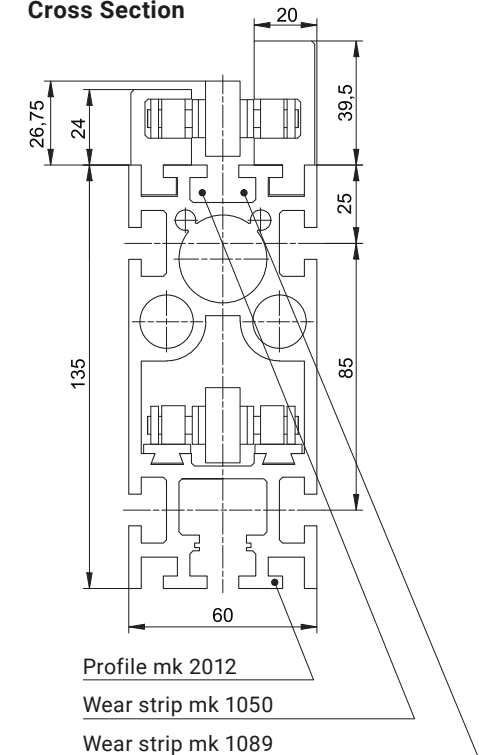
Longitudinal slots in the mk 2012 profile beam provide flexible options for connecting struts, guides, sensors and components from the mk profile system. Like all chain conveyors, the system can be equipped with an optional tensioning device and continuous lubrication device to extend the service intervals.

## Benefits of the SRF-P 2012

- Basis for constructing transfer lines with accumulated operation
- Ideal for low-maintenance and durable use in accumulated and cycling operation
- For interlinking and buffering between workstations and for transporting work-piece carriers
- Large selection of drives
- Suitable for dirty and oily environments

5

### Cross Section

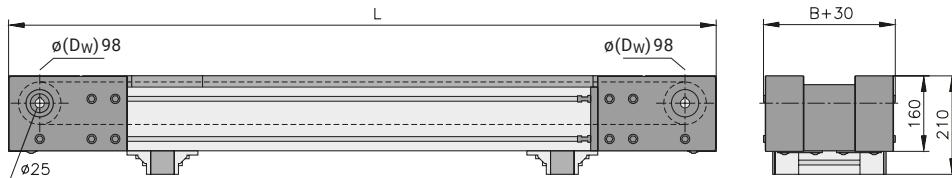




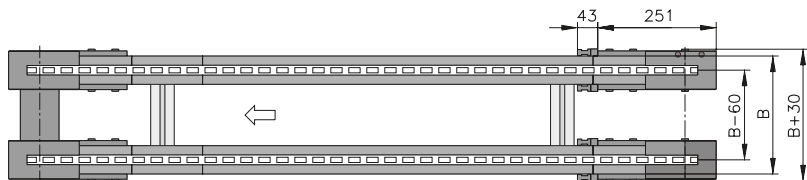
## AA – Head drive without motor

B20.12.008

The AA version with no motor is suitable for connection to an existing conveyor with a drive, either in parallel or in series. This allows you to operate multiple conveyors with only one motor. Depending on your requirements, the conveyor is designed either with a hollow shaft or with a connecting shaft with shaft journal ( $\varnothing 20/25$  mm, usable length of 40 mm, includes DIN 6885 key).



For information about wear strip options, see page 213



## Technical data

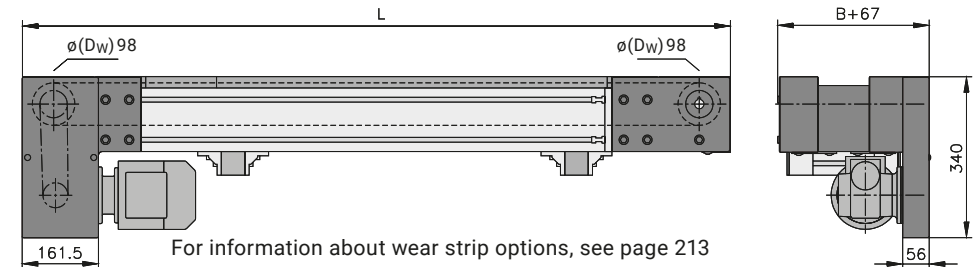
Conveyor length L	individual from 1000–10000 mm (note the chain pitch)	
Conveyor width B	200 to 2000 mm	
Chains	3/4" accumulating roller chain with plastic or steel rollers	p. 217
Drive and speed	up to 30 m/min	p. 12
Stand and side rail		from p. 286
Standard total load	up to 1000 kg	higher on request
Standard distributed load	up to 150 kg/m	



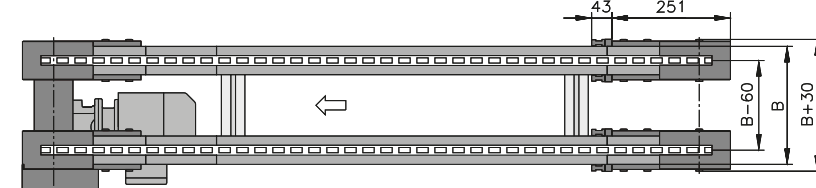
## AC – Standard head drive

B20.12.007

The drive chain on indirect drives can be used as a reduction gear. This makes it easy to design the conveyor with the appropriate speed, particularly in the low-speed range. In addition, the drive chain can compensate for alignment errors and assembly tolerances to ensure that both lines run synchronously.



For information about wear strip options, see page 213



## Technical data

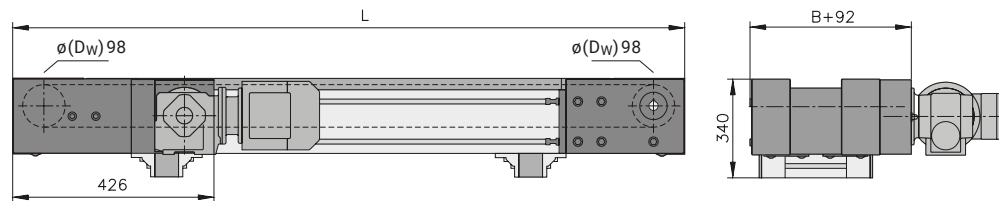
Conveyor length L	individual from 1000–10000 mm (note the chain pitch)	
Conveyor width B	200 to 2000 mm	
Chains	3/4" accumulating roller chain with plastic or steel rollers	p. 217
Drive location	discharge end left/right, underneath	
Drive and speed	up to 30 m/min	p. 12
Stand and side rail		from p. 286
Standard total load	up to 1000 kg	higher on request
Standard distributed load	up to 150 kg/m	



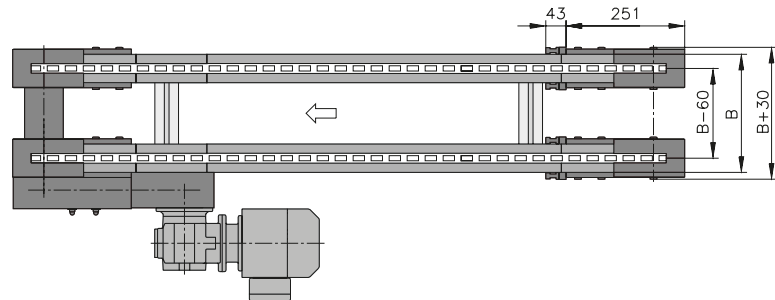
## AS – Head drive, laterally on the outside, compact

B20.12.009

The drive positioned laterally on the outside allows the total height of the conveyor to be restricted to a minimum.



For information about wear strip options, see page 213



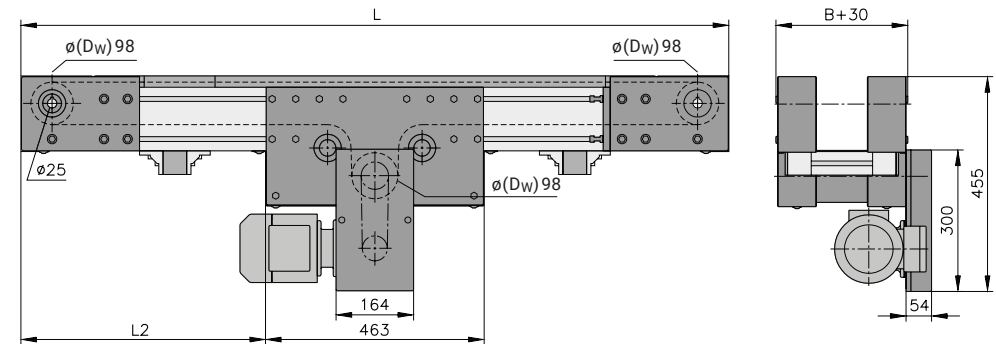
## Technical data

Conveyor length L	individual from 1000–10000 mm (note the chain pitch)	
Conveyor width B	200 to 2000 mm	
Chains	3/4" accumulating roller chain with plastic or steel rollers	p. 217
Drive location	discharge end left/right	
Drive and speed	up to 30 m/min	p. 12
Stand and side rail		from p. 286
Standard total load	up to 1000 kg	higher on request
Standard distributed load	up to 150 kg/m	

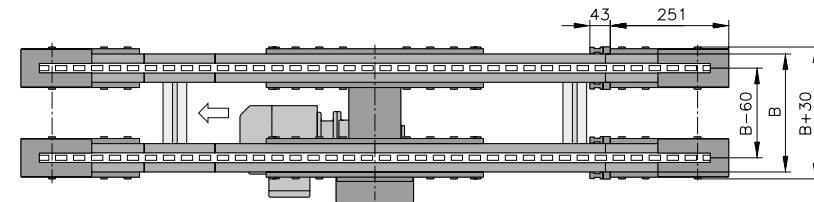
## BC – Lower run drive, standard

B20.12.010

The compact conveyor frame design and the ability to freely select the drive position over the entire length of the conveyor make it easier to integrate the conveyor into existing systems.



For information about wear strip options, see page 213



## Technical data

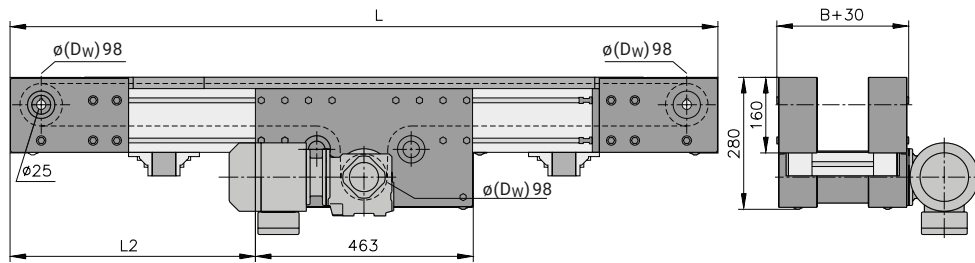
Conveyor length L	individual from 1000–10000 mm (note the chain pitch)	
Conveyor width B	200 to 2000 mm	
Chains	3/4" accumulating roller chain with plastic or steel rollers	p. 217
Drive location	left/right underneath	
Drive and speed	up to 30 m/min	p. 12
Stand and side rail		from p. 286
Standard total load	up to 1000 kg	higher on request
Standard distributed load	up to 150 kg/m	



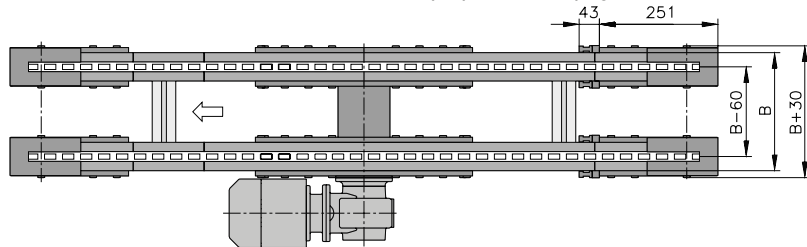
**BF – Lower run drive, direct**

**B20.12.011**

Since the motor is fitted directly onto the drive shaft, the space requirements and maintenance effort for this drive version are reduced to a minimum. The compact conveyor frame design and the ability to freely select the drive position over the entire length of the conveyor make it easier to integrate the conveyor into existing systems.



For information about wear strip options, see page 213

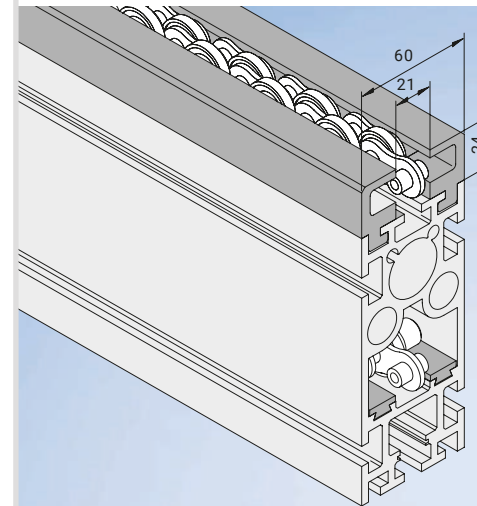


**Technical data**

<b>Conveyor length L</b>	individual from 1000–10000 mm (note the chain pitch)	
<b>Conveyor width B</b>	200 to 2000 mm	
<b>Chains</b>	3/4" accumulating roller chain with plastic or steel rollers	p. 217
<b>Drive location</b>	discharge end left/right	
<b>Drive and speed</b>	up to 30 m/min	p. 12
<b>Stand and side rail</b>		from p. 286
<b>Standard total load</b>	up to 1000 kg	higher on request
<b>Standard distributed load</b>	up to 150 kg/m	

Wear and guide strips from mk ensure low friction. The wear strips are made from PE-UHMW (PE-1000). Temperature range up to a maximum of 65° C.

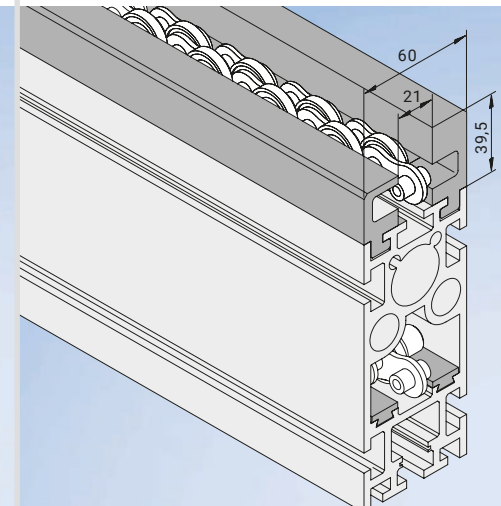
**Option A**



Top wear strip mk 1089  
**22.89.2000**

Bottom wear strip mk 1022  
**22.22.2000**

**Option B**



Top right wear strip mk 1050  
**22.50.2000**

Top left wear strip mk 1089  
**22.89.2000**

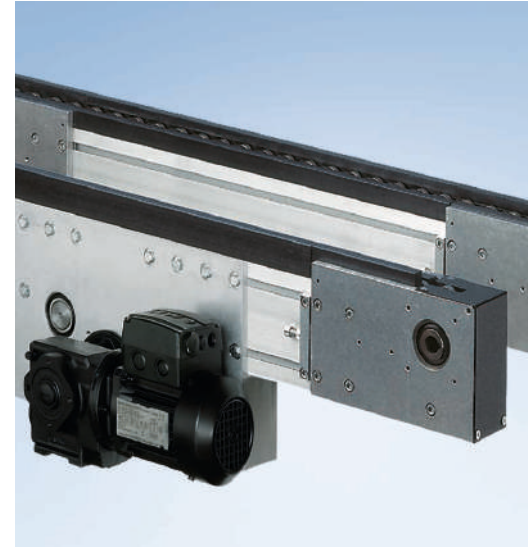
Bottom wear strip mk 1022  
**22.22.2000**



Accumulating roller chain conveyor SRF-P 2012 with head drive AC



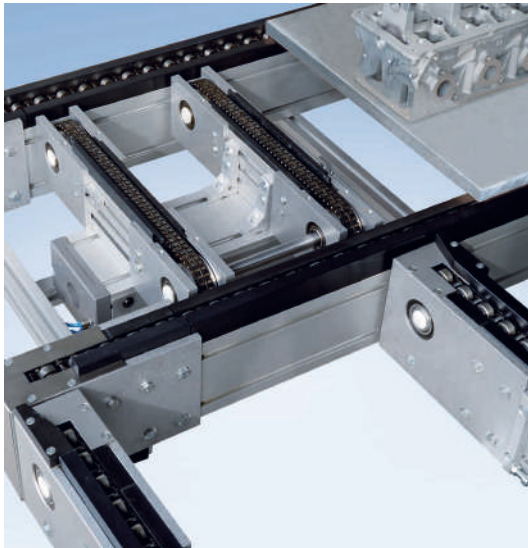
Accumulating roller chain conveyor SRF-P 2012 with special wear strips for heavier loads



Accumulating roller chain conveyor SRF-P 2012 with lower run drive BC



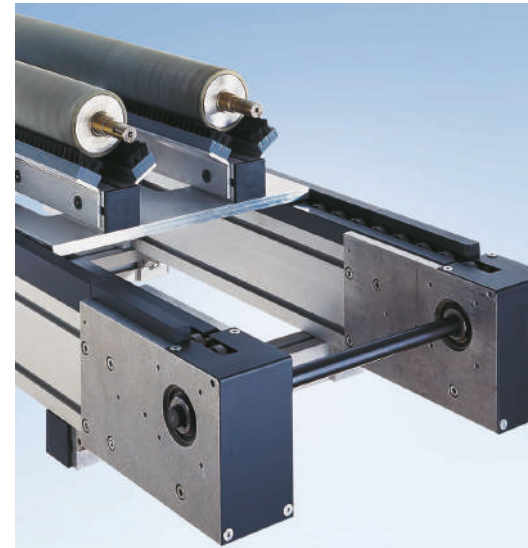
Accumulating roller chain conveyor SRF-P 2012 with head drive AC as single line



Accumulating roller chain conveyor SRF-P 2012 with lift-and-transfer unit KTF-P 2010



Accumulating roller chain conveyor SRF-P 2012 as heavy-duty version with offset accumulating roller chain



Accumulating roller chain conveyor SRF-P 2012

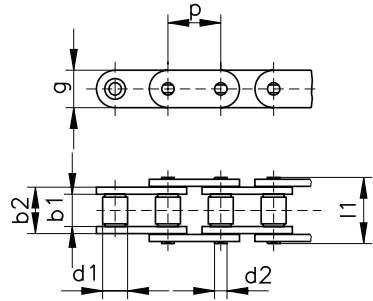


Accumulating roller chain conveyor SRF-P 2012 with automatic tensioning device with traffic light marking

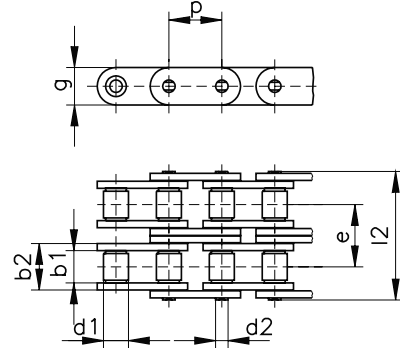
Custom applications from page 404

... for KTF-P 2010

Roller chain, 1/2" x 5/16", single with straight nuts



Roller chain, double with straight nuts



**KTF-P 2010**

Steel chain K11402  
Locking link K114020001

**KTF-P 2010**

Steel chain K11416  
Locking link K114160001

St = steel roll, VSG = locking link

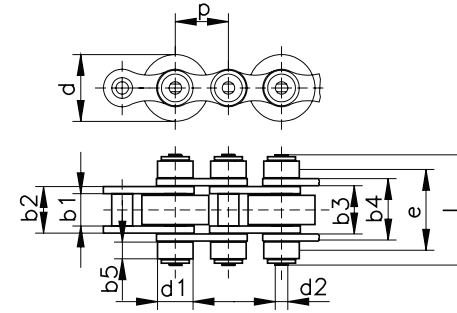
**Dimensions in mm**

	12.70 (1/2" x 5/16")		2.70 (1/2" x 5/16")
<b>p</b>	12.70 (1/2" x 5/16")	<b>p</b>	2.70 (1/2" x 5/16")
<b>b1</b>	7.75	<b>b1</b>	7.75
<b>b2</b>	11.30	<b>b2</b>	11.30
<b>b3</b>	•	<b>b3</b>	•
<b>b4</b>	•	<b>b4</b>	•
<b>d1</b>	8.51	<b>d1</b>	8.51
<b>g</b>	11.50	<b>g</b>	11.80
<b>d2</b>	4.45	<b>d2</b>	4.45
<b>l1</b>	17	<b>l1</b>	•
<b>l2</b>	•	<b>l2</b>	31
<b>e</b>	•	<b>e</b>	13.92
<b>l</b>	•	<b>l</b>	•
<b>b5</b>	•	<b>b5</b>	•
<b>d</b>	•	<b>d</b>	•

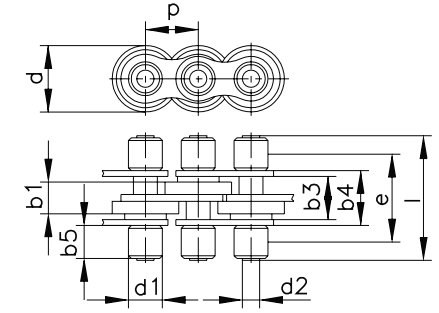
up to 60° C, special version up to 120° C

... for SRF-P 2010 and SRF-P 2012

Accumulating roller chain with accumulating rollers in series



Accumulating roller chain with accumulating rollers offset



**SRF-P 2010**

Steel chain K11418  
Chain, plastic roller, K11435  
Steel chain, finger guard, K11425  
Chain, plastic roller, finger guard, K11424  
Locking link K114180001

**SRF-P 2012**

Steel chain K11415  
Chain, plastic roller, K11407  
Locking link K114060001

**SRF-P 2010**

Steel chain K11421  
Chain, plastic roller, K11420  
Locking link K114180001

**SRF-P 2012**

Steel chain K11423  
Chain, plastic roller, K11422  
Locking link K114060001

St = steel roller, Kst = plastic roller, FES = protective finger guard, VSG = locking link

**Dimensions in mm**

	12.70 (1/2")	19.05 (3/4")		12.70 (1/2")	19.05 (3/4")
<b>p</b>	12.70 (1/2")	19.05 (3/4")	<b>p</b>	12.70 (1/2")	19.05 (3/4")
<b>b1</b>	7.75	11.68	<b>b1</b>	9.20	11.70
<b>b2</b>	11.15	15.62	<b>b2</b>	-	-
<b>b3</b>	11.40	15.80	<b>b3</b>	11.40	15.80
<b>b4</b>	14.70	20	<b>b4</b>	14.50	19.55
<b>d1</b>	8.50	12	<b>d1</b>	8.51	12.07
<b>g</b>	•	•	<b>g</b>	•	•
<b>d2</b>	4.45	5.72	<b>d2</b>	4.45	5.72
<b>l1</b>	•	•	<b>l1</b>	•	•
<b>l2</b>	•	•	<b>l2</b>	•	•
<b>e</b>	•	•	<b>e</b>	18.70	31.50
<b>l</b>	27	48	<b>l</b>	27	45
<b>b5</b>	4	11.50	<b>b5</b>	6.25	12.73
<b>d</b>	16	24	<b>d</b>	16	24

up to 60° C, special version up to 120° C