

» A variety of track layouts with just one drive. «

The curved modular belt conveyor KMF-P 2040 is the curved version of this conveyor type. The curve is available with different track layouts (L/S/U) and curve angles of 45° and 90°.

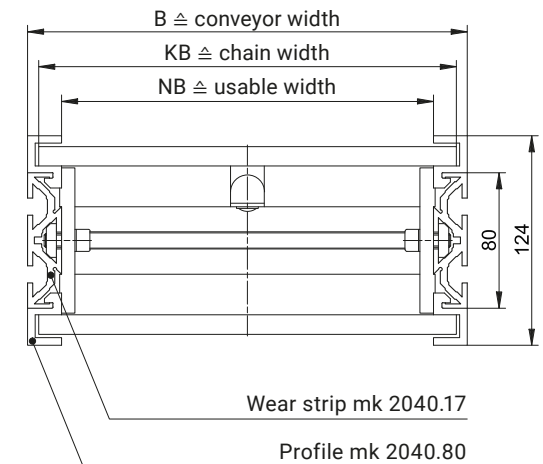
The conveyor width ranges from 164 mm and offer excellent usable width ratios, which is important if space is limited at your facility. These conveyors can be combined with straight sections (MBF-P 2040) and vertical inclines (KFM-P 2040) to adapt the track layout to your existing production conditions and create virtually any three-dimensional configuration.

Modular belt conveyors are extremely robust and can be used in a multitude of ways for almost every transport application. The belts are wear resistant and can even be used to transport goods with sharp edges or to transport goods in harsh application environments. The conveyor system also offers various chain materials to make it suitable for food, suitable for high temperatures or resistant to chemicals.

Benefits of the KMF-P 2040

- High load capacities available
- Positive drive mechanism eliminates slippage and makes it suitable for wet applications
- Maximum usable width with low total width
- Lateral movement of conveyed products
- Chain material is highly resistant to wear and abrasion, making it suitable for high temperatures, contact with chemicals or food, etc.
- Variable track layouts with just a single drive, different speeds at no additional cost

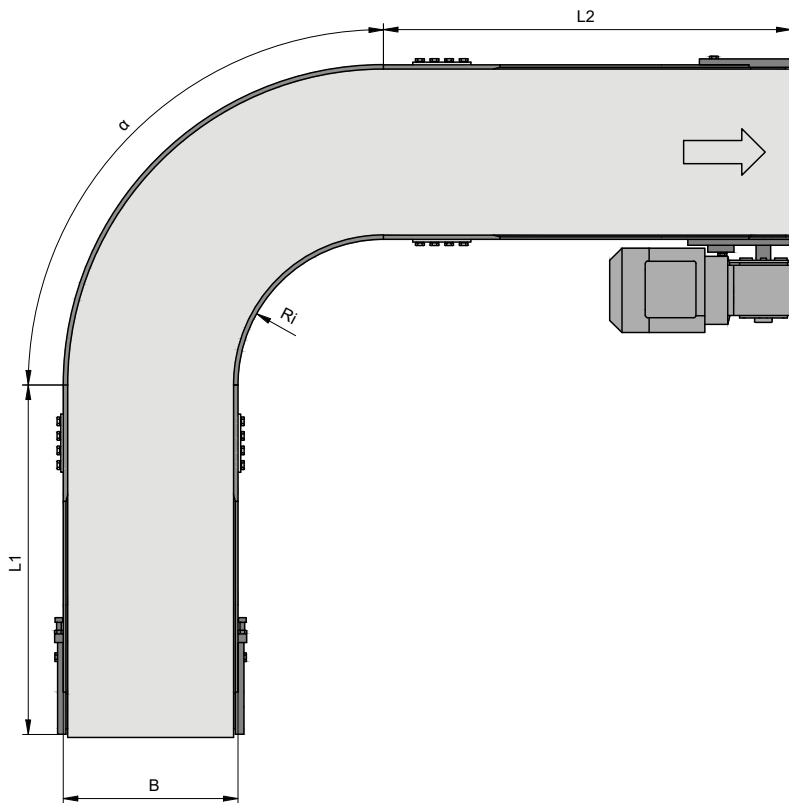
Cross Section



Head drives AC, AF and AS

B20.40.8 _ _

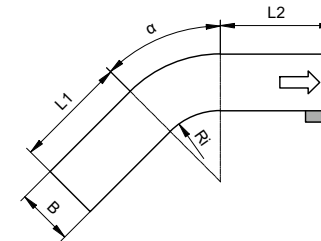
The curved modular belt conveyor KMF-P 2040 has a modular design and, with just one drive for complex track layouts, is extremely efficient. At lengths of up to three metres, the chain does not sag but the belt still runs quietly. With lengths of around three metres or more, there is chain sagging on the drive end, which is enclosed by a protective box. This results in an additional obstructing edge.



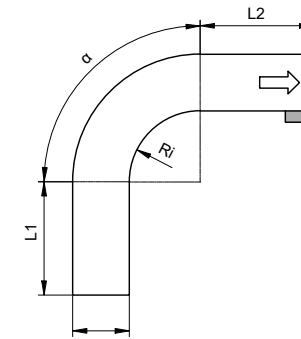
Technical data

Curve angle α	45° and 90° (in combination, also 135° and 180°)
Drive	head drives AC, AF and AS
Speed	5 to 30 m/min
Load capacity	depending on the track layout, conveyor length and conveyor width, up to 150 kg. Higher on request.
Cleats and side plates	the modular belt can be fitted with optional transverse cleats and side plates with H = 25 mm.

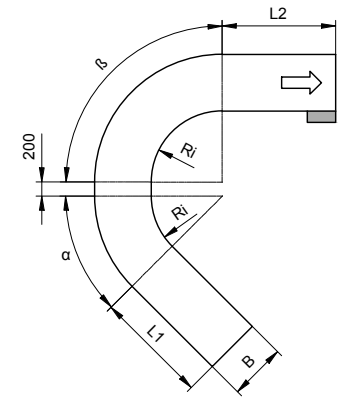
Curve L45°



Curve L90°

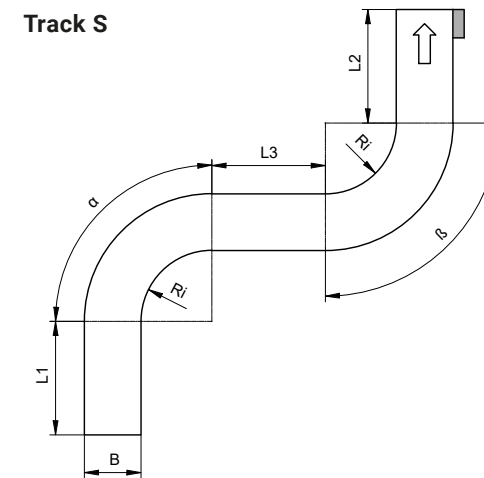


Curve L135° (also available as L180°)

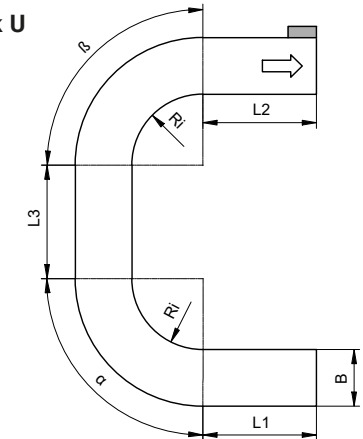


Examples of a Track Layout

Track S



Track U



Dimensions [mm]

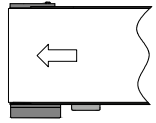
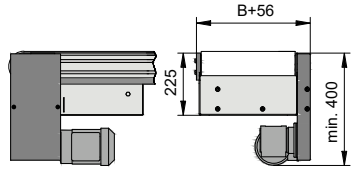
only for L45° or L90°

Conveyor width (B)	164	241	317	394	470	546	623	699	776	852	928	1005	
Chain width (KB)	149	226	302	379	455	531	608	684	761	837	913	990	
Usable width (NB)	134	211	287	364	435	511	588	664	741	817	893	970	
Length L1 (min.)	224	339	453	569	683	797	912	1026	1142	1256	1370	1485	
Length L2 (min.)	645	645	645	758	910	1062	1216	1368	1522	1674	1826	1980	
Length L3 (min.)	Track S	400	452	604	758	910	1062	1216	1368	1522	1674	1826	1980
	Track U	400	400	400	400	400	400	400	400	400	400	400	
Inner radius (Ri)	324	493	660	830	997	1164	1334	1501	1670	1837	2005	2174	



Head drive AC

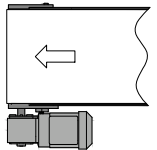
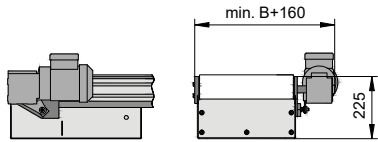
type L: B20.40.826 | type S: B20.40.827 | type U: B20.40.828



Properties	Standard head drive. Drive version with a variety of combination options for motors, gearboxes and sprocket wheels.
Drive location	discharge end left/right
Motor orientation	0°, 90°, 180°
Speed	5 to 30 m/min

Head drive AF

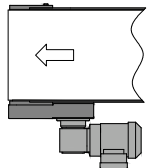
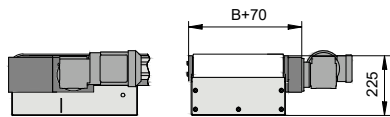
type L: B20.40.823 | type S: B20.40.824 | type U: B20.40.825



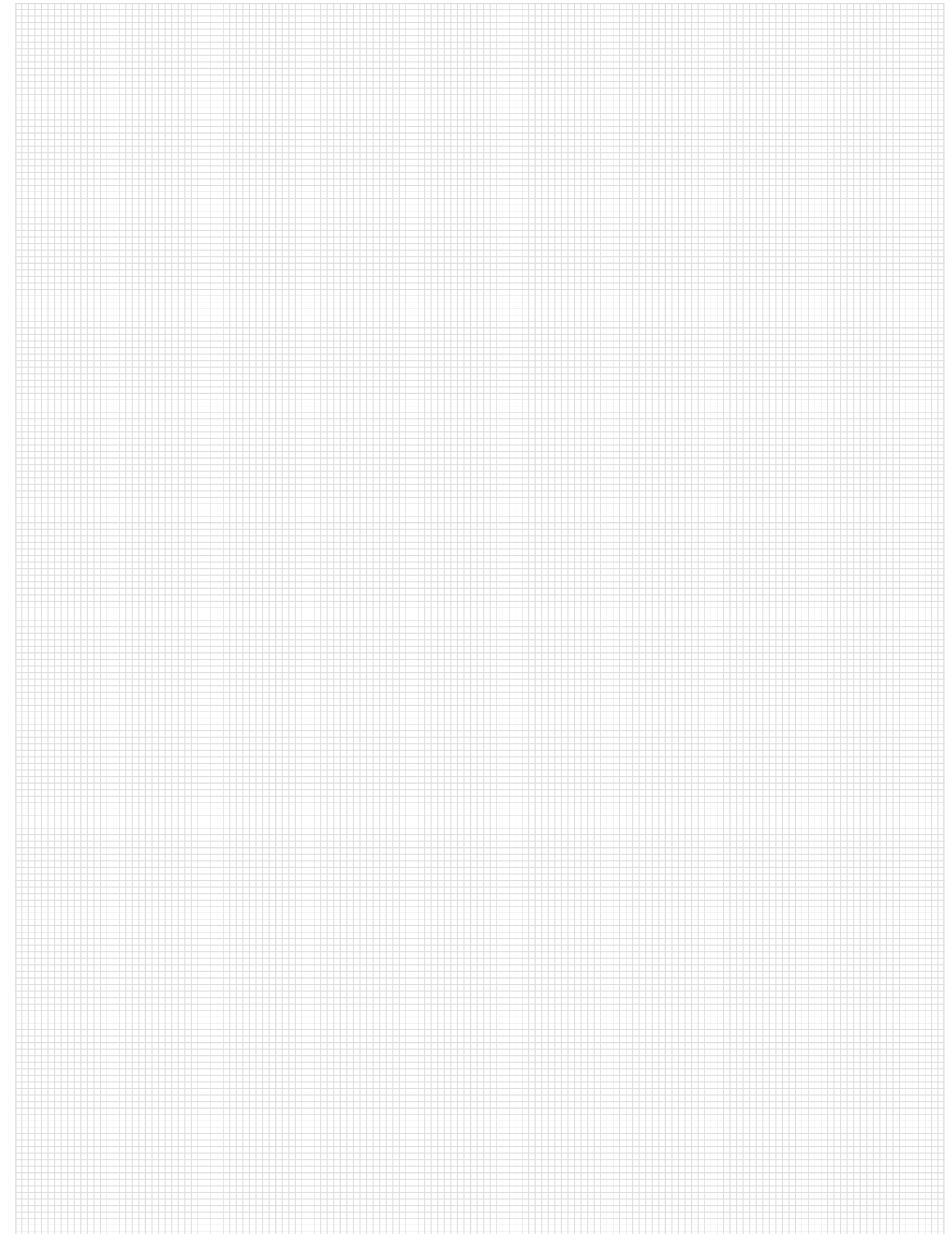
Properties	Direct head drive. Compact and low-maintenance drive version with a motor that is fitted directly on the drive shaft.
Drive location	discharge end left/right
Motor orientation	0°, 90° (front terminal box), 180°, 270°
Speed	5; 7; 10; 12.5; 17; 20.5; 26; 29.5 m/min

Head drive AS

type L: B20.40.820 | type S: B20.40.821 | type U: B20.40.822

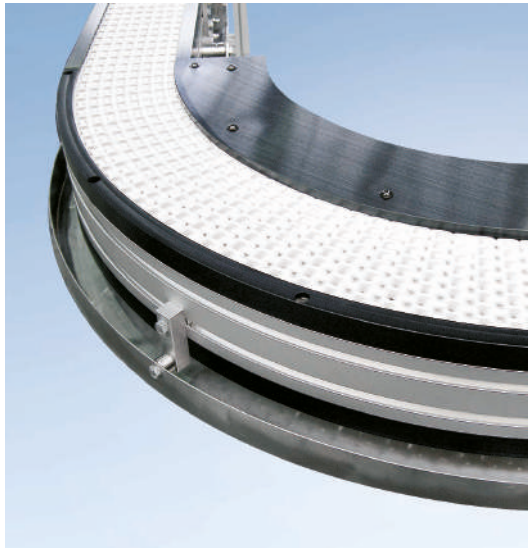


Properties	Compact head drive, positioned laterally on the outside. A drive version restricted to a minimum total height with motor mounted on the outside.
Drive location	discharge end left/right
Motor orientation	0°, 90°, 180°, 270°
Speed	5 to 30 m/min





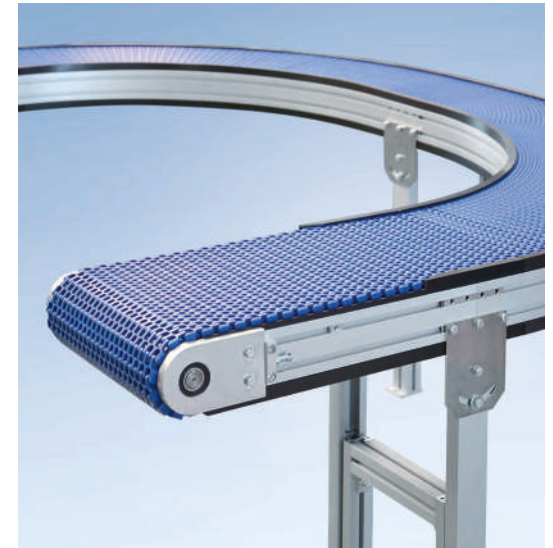
Curved Modular Belt Conveyor KMF-P 2040



Curved modular belt conveyor KMF-P 2040 with 90° rolling curve and drip pan



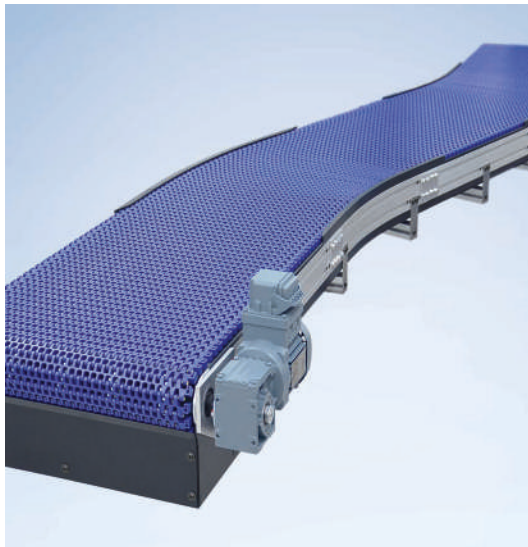
Curved modular belt conveyor KMF-P 2040 with side rail SF2.1



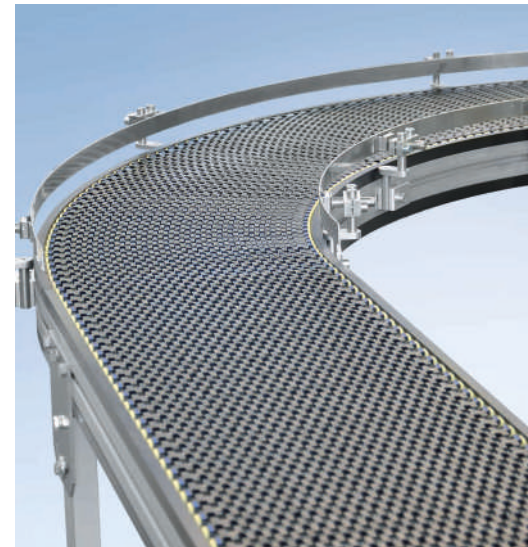
Curved modular belt conveyor KMF-P 2040 with 180° curve



Curved modular belt conveyor KMF-P 2040 with side rail SF02 type 23



Curved modular belt conveyor KMF-P 2040 with S-course 19° sliding curves and head drive AF



Curved modular belt conveyor KMF-P 2040 with side rail SF02



Curved modular belt conveyor KMF-P 2040 with drip pan and movable stand

Custom applications from page 404