

Chapter 8 Rotary Tables



Rotary Tables

DTZ-P 2040

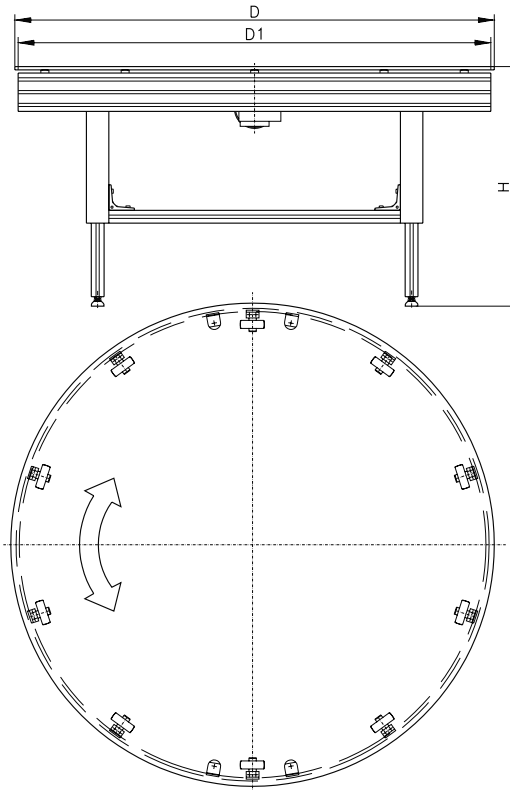
274



Application Examples

276

Rotary Table DTZ-P 2040



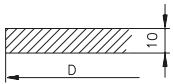
8

Technical data

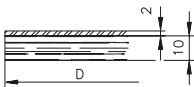
Rotary table Ø	D1 = 750, 1000, 1250, 1500 mm	others on request
Rotary table top		p. 275
Drive version	chain	special designs available on request
v const (U/min)	1 – 8 U/min	others on request
Load	100 kg	
Side rails		on request
Height H	H = 500 – 1500 mm	others on request

Table Tops

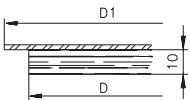
The table tops listed below are standard versions. Special versions are available on request.



Variant 1.1
Laminated top



Variant 1.2
Laminated top
With VA steel shelf

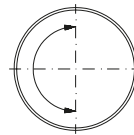


Variant 1.3
Laminated top
with protruding
VA steel shelf
(for short workpieces)

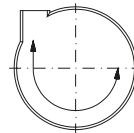
Infeed and Discharge Designs

The designs below are standard versions that can be combined. For all the designs, you can choose either clockwise or anti-clockwise rotation.

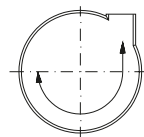
When designing diverters, the weight and shape of the product being conveyed plays a major role. mk therefore creates the technical design of the diverters based on the customer's specific requirements. With extensive experience in interlinking and conveying applications, mk can draw on a wealth of previously implemented solutions. For example, we can implement adjustable diverter plates that are integrated into the control system.



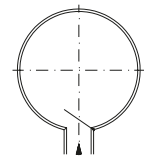
Design A



Design B
Left slide bed



Design C
Right slide bed



Design D
Central slide bed

Sample order

DTZ-P 2040 Design C

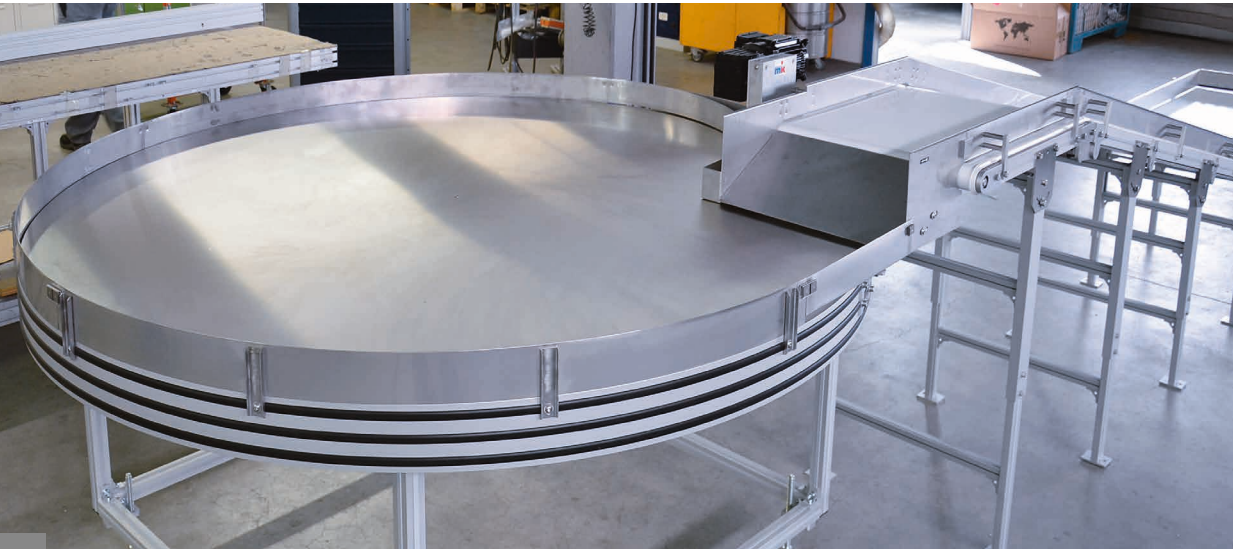
D1 = 1000 mm

H = 800 mm

Table top variant 1.1

v = 2 U/min anti-clockwise rotation

Application Examples



8

Rotary table with timing belt drive (\varnothing 2000 mm), application in the pharmaceutical industry



Rotary table with additional custom add-on



Rotary table with covered support frame



Lightweight and cost-efficient mobile rotary table



Rotary table with timing belt drive and belt conveyor, all with electrical height adjustment using the telescopic column

8



Rotary table with friction belt drive



Rotary table with direct drive, stainless steel sheet around the perimeter and single-track discharge